

## Further Processing North America Equipment Range

### The right systems and machinery for smart sanitation.

For any further processing plant, the right equipment is a key ingredient for a successful sanitation program. From entryway foamers and bootwashers to automated mixing and chemical dispensing systems, everything is built with sanitary design in mind. Diversey understands the path to safe food involves multiple steps all working together for efficient food plant sanitation.

Looking for an SDS? Visit [sds.diversey.com](https://sds.diversey.com)



### Further Processing Equipment

#### Harvesting / Processing Facility Equipment



#### Antimicrobial Spray Conveyor

##### Description:

- Integrates with existing processing equipment or conveyor system to apply antimicrobials
- Unlike some “one-size-fits-all” conveyors, our system is available in any width, length or height to match your specific needs
- Can use with different types of antimicrobials such as Beefxide, Porkxide, Lactic Acid and PAA



#### Automatic Mixing System

##### Description:

- Delivers the antimicrobial at the proper concentration, pressure and flow
- Automatic mixing systems available for manual mix, automated mix, high volume mix



#### Manual Mixing Station

##### Description:

- Delivers the antimicrobial at the proper concentration, temperature, pressure and flow
- Custom-built to your specifications

## Further Processing Equipment

### Chemical Mixing & Dispensing



Product Image  
Coming Soon

#### Blend OnSite Solutions

##### Description:

- Chemical blending, dispensing and tracking system.
- Dispenses the exact quantity, composition and concentration to your plant's specifications.
- Benefits reach every level of the plant- from chemical cost savings to tracking and reporting chemical usage and cost down to the department or individual user level.



#### DEMA 633 Blend Center Single Station Dispenser

##### Description:

- Connects to a number of systems without needing tools
- Compact size makes for easy installation
- Easy to access for service without needing to remove unit from the wall; water valve requires no tools to service
- Water inlet easily switches from left to right side
- Separate models for Action Gap or Air Gap back flow protection.

#### Sanitation Chemical Dispensing System

##### Description:

- Can be customized to fit your operation including the chemical quantities needed to ensure a thorough sanitation process
- Can deliver a single amount of multiple chemicals or differing amounts of one chemical



#### CIP, anti-foam and other chemical dispensing applications

##### Description:

- Fully customizable systems available to dispense chemicals to a CIP system, dispense antifoams or antimicrobials, or any other possible chemical application
- Whether you need to dispense ounces or gallons, we can create a solution to fit your needs

#### DEMA 845/846 Industrial Laundry Master Dispenser

##### Description:

- Large stainless steel enclosure accommodates up to 6 pumps
- Two large pump options with volume of 40 ounces (1185ml) per minute and 50 ounces (1480ml) per minute
- 9 formula capability and separate USM formula remote
- On-board programming

## Further Processing Equipment

### Sanitation



#### Boot Scrubber

##### Description:

- Automatically washes and sanitizes the soles, tops and sides of boots
- Place at entry points to the plant to control cross-contamination between processing areas



#### Entry Way Sanitizer / Foamer

##### Description:

- Uniquely-designed foamer body generates more foam using less chemicals
- Fully programmable to dispense more product during peak travel times



#### Automatic Lug Wash

##### Description:

- Rinse, foam rinse and sanitize lugs
- Use hot or cold water
- Washes up to 6 lugs per minute
- Metered chemical and sanitizer application for consistency
- Payback in about 1 year



#### DEMA ProFoam Model 289

##### Description:

- Hose end foamer and sprayer
- Includes a 32-ounce bottle and spray gun with quick disconnect fittings
- Attaches to any garden hose
- Quick disconnect allows spray gun to be removed easily from dispenser for clear water rinse



#### FOAM-iT Portable Foam Unit - 30 gallon

##### Description:

- Universal hinged back plate. Tool-free access to components
- Quick-change pump. Lift bracket to release pump
- Natural color tank helps you see product levels
- Hinged lid; available in 5 colors
- Front-facing drain
- In-line strainer protects pump from debris
- FOAM-iT item # FI-30N
- Also available in 5, 10, 15, 20, 25 and 50-gallon

## Further Processing Equipment

### Sanitation



#### FOAM-iT 15 Gallon Battery Foam Unit

##### Description:

- Draws from pre-mixed solution
- Battery-powered – no air lines or power cords to hold you back
- Use up to 2 hours from one charge
- Battery level indicator on back plate
- Use with low-foaming chemical products
- Natural color tank helps you see product levels
- Hinged lid, available in 5 colors
- Integrated hose wraps
- In-line strainer to protect pump from debris
- FOAM-iT item # FI-BP-15N



#### FOAM-iT 10 Gallon Battery Foam Unit with Stainless Steel Ball Valve

##### Description:

- Draws from pre-mixed solution
- Battery operated
- Up to 45 minutes of use from one charge
- Stainless ball valve with foam fan tip
- Hinged back plate provides tool-free access to components
- Natural color tank helps you see product levels
- Hinged lid, available in 5 colors
- Integrated hose wraps
- Front-facing drain
- FOAM-iT item # FI-10N-B-SSBV



#### FOAM-iT Drain Foaming Attachment

##### Description:

- Foam travels through drains, providing 360° contact along pipe walls for maximum sanitation
- Stainless steel foam disc to cover drains up to 12 inches in diameter
- Rubber stopper to plug drains 3.5 to 5 inches in diameter
- Connects to compatible FOAM-iT units using included quick-connect fittings
- FOAM-iT item # DFA



#### Trench Drain Foam Attachment

##### Description:

- Foam travels through drains, providing 360° contact along pipe walls for maximum sanitation
- Stainless steel construction
- 7 inch round, flat brush designed for foaming trench drains
- Connects to compatible FOAM-iT units using included quick-connect fittings
- FOAM-iT item # DFA-TR7



#### Dosatron® 14 GPM Injector

##### Description:

- Install directly into water supply line; uses water pressure as its power source
- Chemical concentrate is proportionate to the volume of water, regardless of variations in main line flow and pressure
- Easy-to-read ratio selector
- GPM: 0.05 to 14 GPM (0.19 to 50 LPM)
- Pressure: 4.3 to 85 PSI
- Dosatron item # 14 GPM: D14MZ2

## Further Processing Equipment

### Water Temperature Controls



#### Emech® Digital ControlValves

##### Description:

- A highly optimized temperature control system
- High speed accuracy. Achieves more in less time
- Increases productivity while lowering utility and maintenance costs
- Superior valve performance allows you to run plans closer to constraints, there by increasing production and yield
- Built to resist corrosion and minimize wear while providing maximum performance
- Patented valve disc system, swirl mixing action, high speed in valve sensing, with embedded PID control of a 100% duty cycle rated stepper motor digital actuator



#### Emech® Hot & Cold Water Mixer

##### Description:

- 3-port mixing valve use sceramic shear action disc technology
- Provides tight shut-off, high pressure differential capability long-life integrity
- Fitted with electronic actuator and integrated temperature sensor
- High-performance stand-alone closed-loop temperature control
- Temperature accuracy to +/- 1°F over a 32°F – 212°F control range
- Capable of blending from 0% to 100% of either inlet temperature



#### Emech® Steam / Water Mixer

##### Description:

- Instantaneous hot water generation
- Shear action disc design of the actuated valve mixes steam and water to precise hot water temperatures for critical cleaning and sanitation applications
- Fitted with electronic actuator and an integrated temperature sensor
- Fast, accurate and stable temperature control
- A constant supply of hot water at a precise temperature
- Single compact assembly simplifies installation



#### KOMAX Direct InjectionSteam Heater

##### Description:

- Breakthrough in water heating and mixing technology, provides high energy efficiency with no maintenance cost
- Provides an unlimited supply of hot water – instantly
- Patented design features: Smooth operation, energy efficient, maintenance free, cost-effective
- Equip with an Emech actuator for precise temperature control



## Further Processing Equipment

### Hand Care



#### HACCP 1-2 Knockout PumpKit Item # DSP-0001

##### Description:

- Atomizing hand sanitizer spray pump kit for one gallon container
- Compatible with hard liter bottles
- Atomized spray saturates nails and cuticles
- Best Sanitizers item # KT10011



#### 1 oz. Pump Dispenser Item #DSP-0004

##### Description:

- Removable cap and optional accessories
- Can use with grit and pumice substances
- 38 mm cap fits standard gallon
- FDA compliant
- Tube Size: 10 3/4"
- Impact® Economy 1 oz. Plastic Dispensing Pump item # 904



#### HACCP 1-2 Knockout Wrist-Activated Dispenser Item #DSP-0009

##### Description:

- Meets HACCP guidelines
- Wall mountable, stainless steel dispenser
- Accommodates one gallon bottles
- Includes KT10011 atomizing hand sanitizer pump kit for gallon bottle
- Best Sanitizers item # MD10006 – comes with KT10011 atomizing pump kit
- Best Sanitizers item # MD10003 – comes with KTFS1002 foaming pump kit



#### EZ-Step Wall-Mounted Foot-Activated Dispenser

##### Description:

- Meets HACCP guidelines
- Hands-free activation eliminates the increased possibility of cross-contamination
- Durable, stainless steel construction
- Best Sanitizers item # MD10105 – comes with KT10011 atomizing pump kit
- Best Sanitizers item # MD10110 – comes with KTFS1002 foaming pump kit



#### EZ-Step Portable Foot-Activated Dispenser

##### Description:

- For use with hand sanitizer spray only
- Meets HACCP guidelines
- Hands-free activation eliminates the increased possibility of cross-contamination
- Durable, stainless steel construction
- Best Sanitizers item # MD10012 – comes with KT10011 atomizing pump kit

## Further Processing Equipment

### Hand Care



#### Gallon Wall Bracket

**Description:**

- Meets HACCP guidelines
- Durable, stainless steel construction
- Best Sanitizers item # MD10200 – comes with KT10011 atomizing pump kit
- Best Sanitizers item # MD10201 – comes with KTFS1003 foaming pump kit



#### Touchless Hand Soap & Hand Sanitizer Dispenser

**Description:**

- 120VAC or battery-powered options
- Easy and quick change between soap and sanitizer
- Compatible with Birko hand soaps and sanitizers
- 1-gallon tank capacity
- Wide-angle spray nozzle (sanitizer only)
- Adjustable dispensing time



#### VersaClenz Manual Hand Hygiene Dispenser Item # DSP-0018

**Description:**

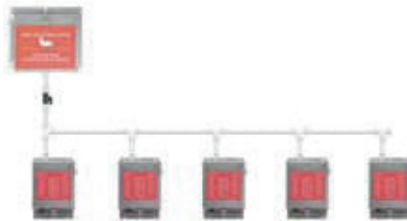
- Compatible with 17 different products
- ADA compliant
- Durable and splash resistant
- Best Sanitizers item # MD100



#### Prizefighter Dispensing System

**Description:**

- Automatic, watertight dispensers
- Durable, stainless steel construction
- Infrared sensors detect hands and dispense a pre-measured amount of liquid soap or hand sanitizer spray
- Best Sanitizers item # AD10022 – Sanitizer spray
- Best Sanitizers item # ADS0002 – Liquid soap



#### Champion Multi-Line Dispensing System

**Description:**

- Automatic, watertight dispensers
- Durable, stainless steel construction
- Infrared sensors detect hands and dispense a pre-measured amount of liquid soap or hand sanitizer spray
- Best Sanitizers item # AD10008 – Sanitizer spray reservoir
- Best Sanitizers item # AD10009 – Liquid soap reservoir
- Best Sanitizers item # AD10019 – Sanitizer spray dispenser
- Best Sanitizers item # AD10019S – Liquid soap dispenser

## Further Processing Equipment

### Hand Care



#### Soap Foam Dispenser #9320 Item # DSP-0012

##### Description:

- Creates a thick and rich foam
- Foams regular lotion soaps with 1:3 soap to water dilution
- Greater skin area coverage with less soap dispensed
- More handwashings at less cost
- 800 ml capacity; dispenses .6 cc in liquid form
- Hidden locking mechanism
- Patented pump system
- Interline Brands item # 9320



#### Lotion Crank Dispenser #1300 Item # DSP-0014

##### Description:

- Made of high-impact, corrosion-resistant ABS plastic
- For 4-liter/1-gallon flat-top jug, approximately 1.4 cc per crank
- Contains built-in reservoir for ready supply of product
- Impact® Lotion Crank Soap Dispenser item # 1300



#### Refillable Liquid Dispenser

##### Description:

- Designed for Lotion Hand Soap (Big Red)
- 2 Liter Capacity Reservoir
- Robust High-quality ABS Plastic



#### Refillable Spray Dispenser

##### Description:

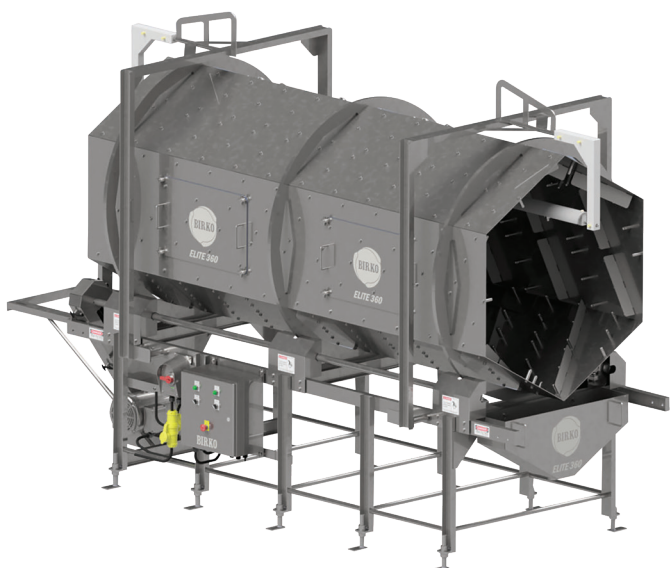
- Designed for Liquid Hand Sanitizer
- (San-It E or Birko San III)
- 2 Liter Capacity Reservoir
- Robust High-quality ABS Plastic





## Further Processing Equipment

### Elite 360®A



A revolution in precision application, Elite 360 uses groundbreaking electrostatic intervention techniques that have the potential to significantly improve food safety. Elite 360 disrupts how antimicrobials are applied to food products.

- Product rotation and electrostatically charged antimicrobial provide precision coverage
- Contains and captures overspray with ultra-high transfer efficiency
- Integrates with existing processing equipment/conveyor systems
- Works successfully with peracetic acid
- Factory-assembled/tested before installation

